



**Services for anyone impacted by
crime in Bedfordshire**

Engagement evening

Date and version number



Welcome to Police HQ

Kevin Vanterpool

Housekeeping



Clare Kelly and Bethan West



The vision for anyone impacted by crime in Bedfordshire



Bethan West



Overview of Services

- Those impacted by crime in Bedfordshire
- Commissioning priorities
- The Future



Kevin Vanterpool



Our new model, our aims and aspirations

- Programme Aims
- Consultation and Outcomes
- What Works?
- Key Features & Referral Process
- Restorative Justice
- Structure



Programme Aims



To identify, design and implement the most effective and efficient delivery mechanism / solution for the assessment and management of services for those impacted by crime.

The solution will:

- deliver high quality services*
- be cost effective and deliver value for money*
- have the capacity and capability to support a range of specialist support for those affected by crime*
- be flexible and responsive to meet needs*
- ensure compliance with all statutory requirements e.g. VCOP.*
- enhance the service users overall experience through the criminal justice system*



Outcomes from Consultation



Success is **best**
defined by the **victim**

We need a
Coordinating function.

Interagency
referral process
presents **risk of**
re-
victimisation

Need to **use technology**
to facilitate both
information exchange
and **access** to services.

Understand and
support victims based
on their needs

Services to work with low
or **medium risk DV** victims

Language
barriers

No Support for
young victims of
DV/SV

Services experience a high
prevalence of mental
health related issues

We can only achieve the
best possible service for
victims by working
effectively in **partnership**.

Disparity exists
across
Bedfordshire

No support for Cyber
bullying, sexting and
being exploited



What Works?



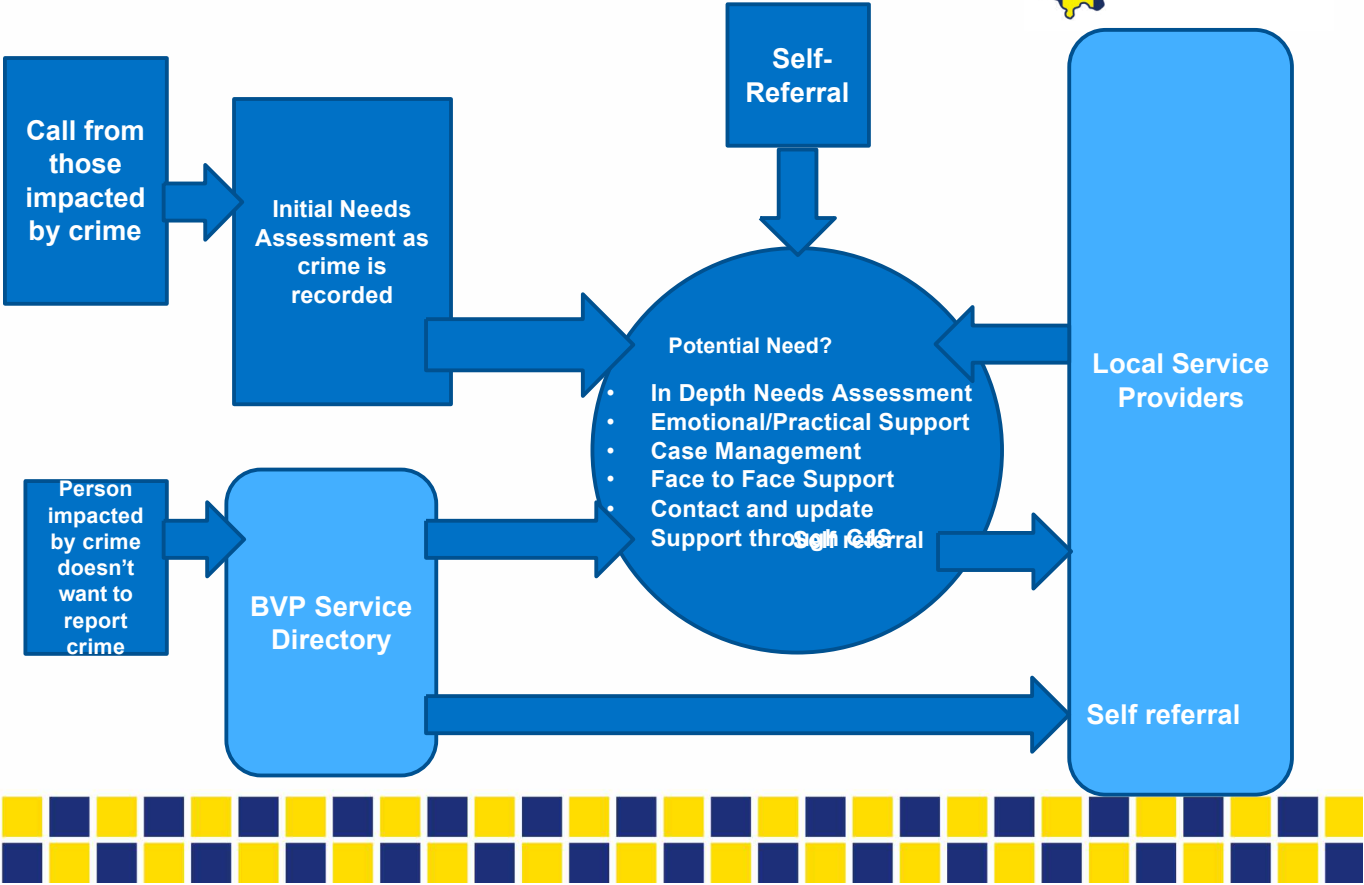
Key Features



Bedfordshire Victims Partnership



Referral Process



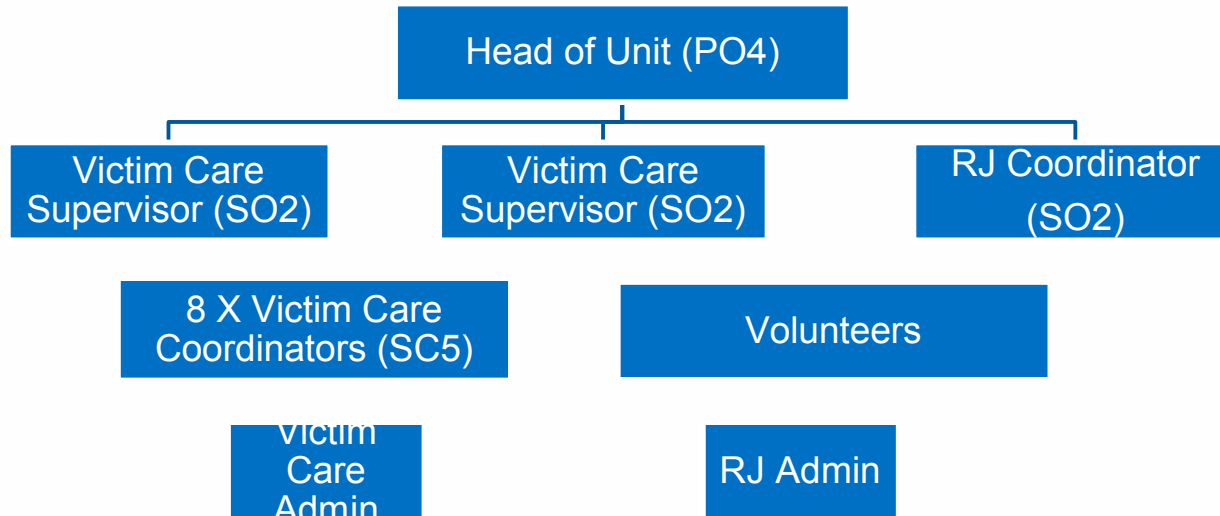
Restorative Justice



- **RJ Hub** – embedded within service
- **Sustainable** - building on local partnership capacity & capability
- **Coordination** of offer, referrals, progress and delivery of interventions
- **Person Impacted by Crime**, rather than offender focused, based on needs.
- Available throughout CJ process as part of cope & recover



Structure



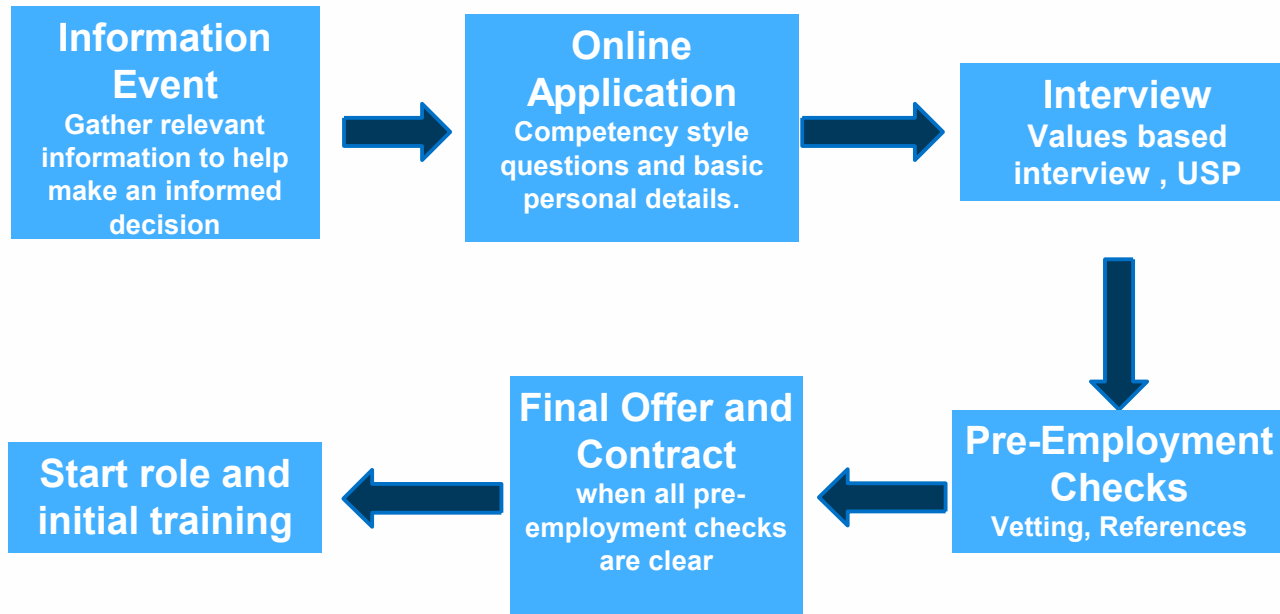
Clare Kelly



- Culture
- Application Process
- Eligibility Criteria
- Recruitment process



Application Process



Eligibility and Policy



Vetting

- May be eligible to join with minor convictions and/or cautions
- Declare everything on the vetting form, including family member's convictions if are aware they have any

Residency

British citizen, EC or EEA National, Commonwealth Citizen, Foreign National with no restrictions to stay in the UK.

Must have lived in the UK for a minimum of three years.

If resided outside of the UK within the last 3 years – will need to complete an overseas questionnaire, this will be send alongside the vetting form.





Q & A